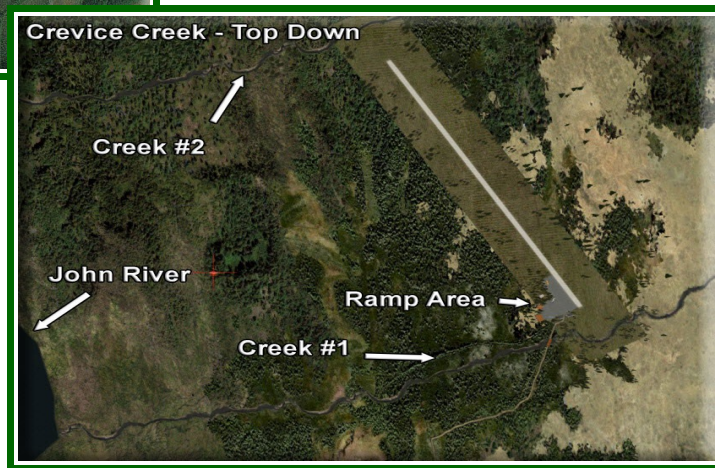
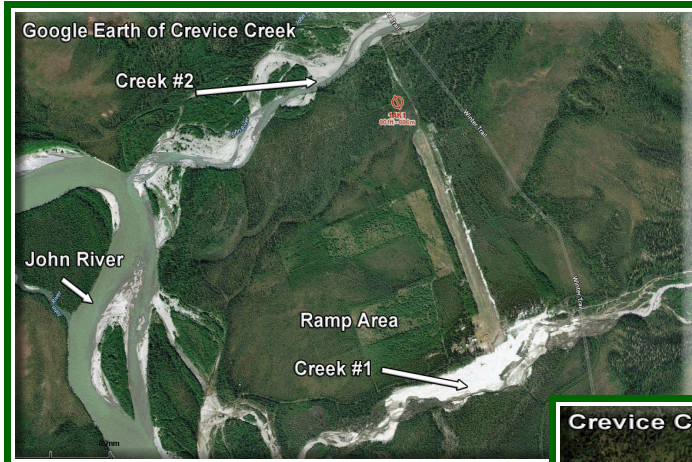


Crevice Creek Airport - 1AK1

This is a “real” location. The basic airport was already in Vector however we used Google Earth to “position” objects and create a likeness of the real Crevice Creek Airport.



Crevice Creek 1AK1 is located about 30 miles NNW of Bettles PABT. You can use “GO TO AIRPORT” to position yourself at the active runway, or you can use this start location for the ramp:

Ramp Start: N67 22.2115 - W152 0.8516 – Mag: 277

History of Crevice Creek

As usual, gold brought us here! Although he did not visit Crevice Creek in 1937, Reed (1938) noted that Crevice Creek flowed principally on bedrock and that the gold that was mined from potholes and crevices in the bedrock. Some of the gold-bearing crevices were several feet deep. Occasional native silver nuggets have been recovered with the gold. Panned-concentrate samples from Crevice Creek contain visible gold grains and abundant magnetite; a sample from a sluice-box concentrate has over 8,000 ppb gold. Mining was reported as early as 1904 and the property was sluice mined in the 1980's. The last year of significant mining on the creek was in 1994, followed by only minor suction dredging on the lower creek in 1998 (Kurtak and others, 2002). Approximately \$1,800 in gold (at \$20.67 per ounce) was said to have been

produced in 1904. Dillon (1982) reports production of 30 ounces of gold per year, but it is unclear whether this production was historical or current as of 1982. Mining was reported as early as 1904 and the property was sluice mined in the 1980's. The last year of significant mining on the creek was in 1994, followed by only minor suction dredging on the lower creek in 1998.

This was an interesting airport to “update” for RTMM. This is what we started with:



Crevice Creek 1AK1 (Before)

Basically a runway and airfield rectangle. Notice there were no creeks on either end of the airport, no lighting, no ramp area.

Here is the result of the update:



Crevice Creek 1AK1 (After)

Notice the creeks are now added, flowing to the John River. Also vegetative landscaping enhances the location.

The airport is minimally lit for night and low light operations. A winter “day” at this latitude is basically similar to “dusk” elsewhere in the world. So adding lights will be helpful for folks flying in winter conditions. Also, this is a “sparse” airport, so no fancy helipads, etc. You can land the heli on the tarmac.



This is an “outlier scenery location” for the BWEP pipeline. It gives you another location to fly to to as you are enjoying the pipeline scenery. (You do not need to have the BWEP pipeline scenery to use this location.

NOTAM: This area is north of the ORBX SAK area. You must use ORBX Global Base/Vector to view this correctly.

We hope you enjoy this updated airport.

Doug Linn/RTMM

=====

DESIGNER CREDITS

Scenery created by Doug Linn

=====

REQUIRED SCENERY

This scenery requires ORBX Global/Vector to work properly. This was created for the BWEP pipeline

project. Having the pipeline scenery will enhance this location for you.

=====

INSTALLATION

Unzip the file to a temporary folder.

Place this scenery areas main folder and it's sub level folder named "Scenery" and all files in that folder

into your FSX/P3D "Addon Scenery" folder.

Start up FSX or P3D

Go to "Settings"

Then to "Scenery Library"

Click on "Add Area"

Click on "Addon Scenery"

Locate the newly installed folder for this package you just moved into your "Addon Scenery" folder of

FSX/P3D

Click on the main folder only. You do NOT need to open the "scenery" folder.

Then click on "OK"

And then "OK" again.

FSX/P3D should begin to recompile your scenery library.

SNOW DOG TOURS NOTAM

If you have Snow Dog Tours, be sure to re-download the latest Snow Dog Tour B – Part 1.

(Dated 2018). If you do not need Snow Dog Tours, but it is recommended as the objects show at several of the airports we are updating.

=====

OBJECT LIBRARY

Be sure you have downloaded the latest BWEP Object Library found on the BWEP page or on the

Object Library Page. Dated at or later than 11.21.2016.

The flight plan is located in RTMM Flight Plans.zip that you can download from the Here2There page.

"To Lodge at Black Rapids from Fairbanks.pln" It's a VFR flight plan to the location up over Valdez

Glacier from Valdez. Then you can call this up in FSX using the flight planner and have a flight plan

on the aircraft GPS to help guide you to this destination. That's it.

=====

DOCUMENTATION

READ ALL OF THE INSTALLATION FILES IN EACH OF THE INCLUDED ZIP FILES WE PRODUCE. THEY ARE NOT ALWAYS GOING TO BE THE SAME!!

DISCLAIMER

User accepts all risk associated with this scenery file. AUTHORS WILL NOT BE HELD ACCOUNTABLE FOR ANY DAMAGE TO USER SYSTEM HARDWARE.

COPYRIGHT and LICENCE

This scenery is released as Freeware.

As freeware you are permitted to distribute this archive subject to the following conditions:

- The archive must be distributed without modification to the contents of the archive. Re-distributing this archive with any files added, removed or modified is prohibited.
- The inclusion of any individual file from this archive in another archive without the prior permission of the author is prohibited. This means, for example, that you may not upload an archive that uses this texture set with your own scenery or include it in a package containing any other scenery without first obtaining the authors' permission.
- No charge, fee or monetary amount may be made from this archive. It's free and must remain that way!!
- The authors' rights and wishes concerning this archive must be respected.

Copyright 2011 by Return to Misty Moorings. All Rights reserved.
